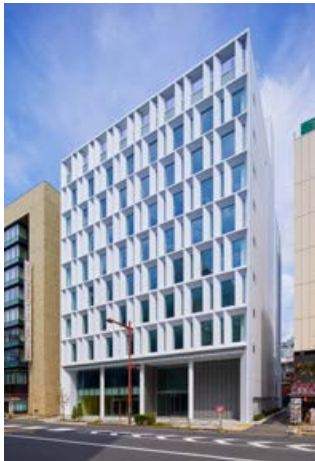


■ **Company Outline** (as of June 1, 2018)



Head office
(oak Kanda Kaji-cho Building 5F)

Name
KOKUSAI ELECTRIC CORPORATION

Address of Head office
3-4, Kanda Kaji-cho, Chiyoda-ku,
TOKYO 101-0045, Japan

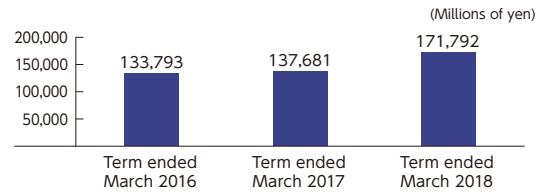
Established
February 2, 2017

Paid-in Capital
¥7,500.025 million

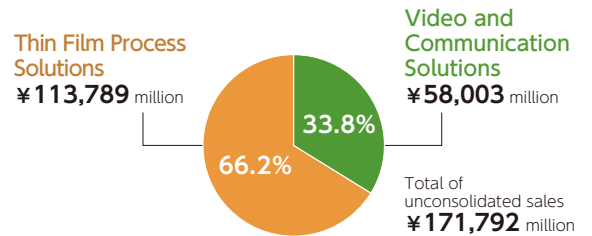
Employees
940 (Unconsolidated)

Note : On June 1, 2018, the Thin Film Process Solutions Segment became independent from Hitachi Kokusai Electric Inc. and made a fresh start as a new company.

■ **Unconsolidated Sales of Hitachi Kokusai Electric Inc.**



■ **Sales of Hitachi Kokusai Electric Inc. by Segment**



■ **Main Products**

Semiconductor Manufacturing Equipment



Batch SiGe / Si Epitaxial Growth System



Single Wafer Plasma Nitridation / Oxidation System



Batch Thermal Process System



Single Wafer Annealing System



High-quality & High-performance Thermal Process System