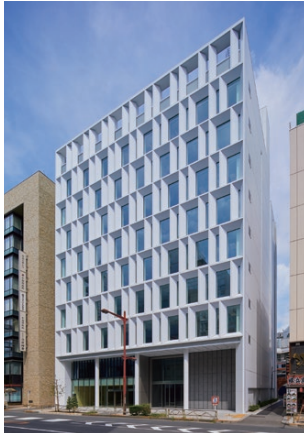


Corporate Data

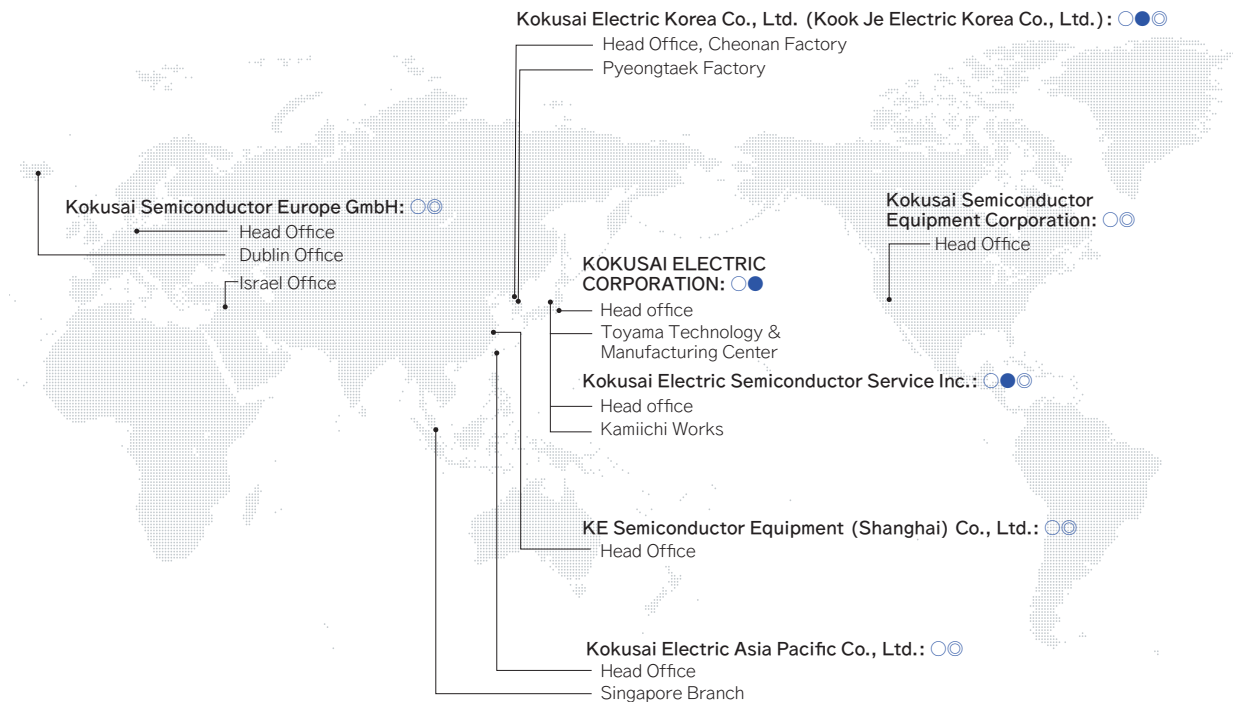
Company Outline (as of March 31, 2021)



Name	KOKUSAI ELECTRIC CORPORATION
Address of Head office	3-4 Kandakaji-cho, Chiyoda-ku, Tokyo 101-0045, Japan
Established	February 2, 2017
Paid-in Capital	¥10 billion (as of September 30, 2021)
Number of employees	2,035 (consolidated)

Group Network (as of April 1, 2021)

○Head office, distribution ●Production ◎Service



KOKUSAI ELECTRIC CORPORATION (the Company) Group Companies: 6 in total with 1 in Japan and 5 overseas. In addition to the above, each company operates several business bases with a focus on services.



For more information on group companies such as details of business bases not shown on the map, see their individual websites.

Kokusai Electric Semiconductor Service Inc.
<https://www.kokusai-electric.com/kss/>

Kokusai Electric Semiconductor Service

Kokusai Electric Korea Co., Ltd.
 (Kook Je Electric Korea Co., Ltd.)
<http://www.kekorea.co.kr/eng/>

Kokusai Semiconductor Equipment Corporation
<http://www.ksec.com/>

Kokusai Electric Asia Pacific Co., Ltd.
<https://www.kap.com.tw/>

Kokusai Semiconductor Europe GmbH
<https://kokusai-se.com>